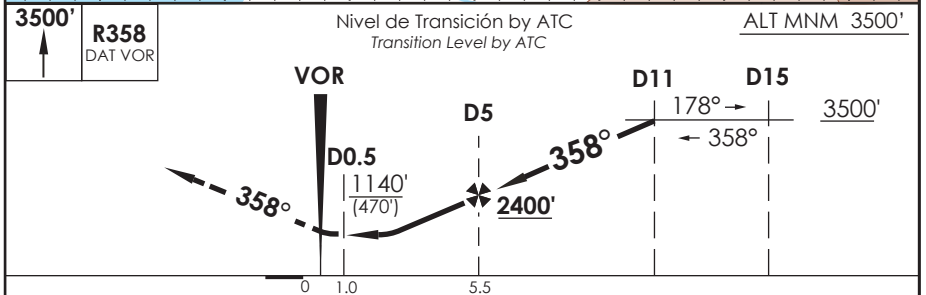
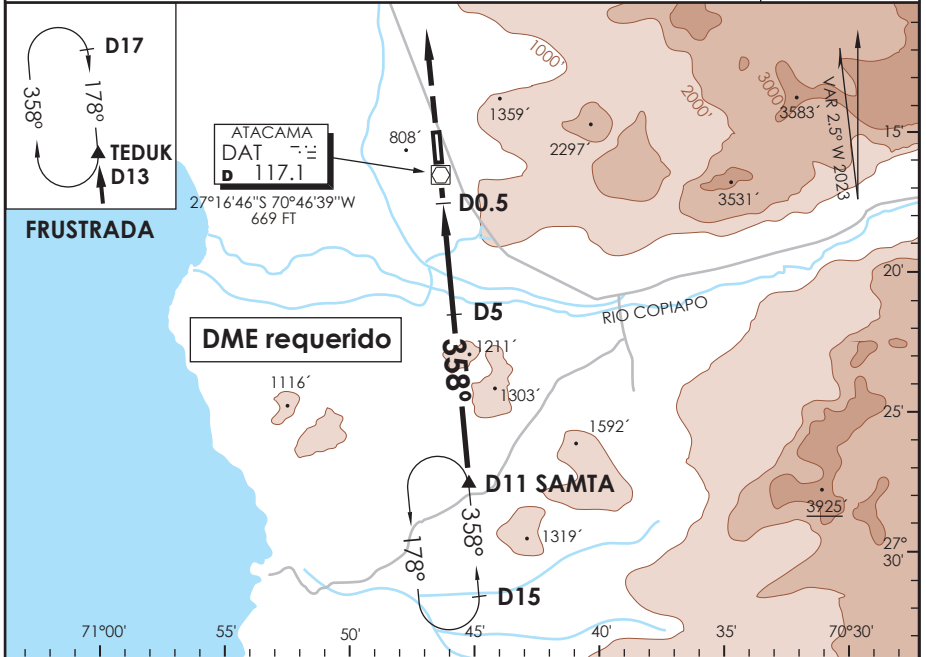


# AD. DESIERTO DE ATACAMA CALDERA - CHILE

SCAT IAC 4  
VOR Rwy 35

APP IQUIQUE RADAR 120.3/128.3 <i>Iquique Radar Approach</i>		TORRE ATACAMA <i>Atacama Tower</i>		118.3	CONTROL TERRESTRE <i>Ground Control</i>		121.6
VOR DAT <b>117.1</b>	FINAL APCH CRS <b>358°</b>	MNM ALT D5 <b>2400'</b>	MDA <b>1140' (470')</b>	AD Elev. <b>670'</b> THR 35 Elev. <b>670'</b>		<div style="border: 1px solid black; border-radius: 50%; width: 60px; height: 60px; display: flex; align-items: center; justify-content: center; margin: 0 auto;">7000 FT</div> MSA 25 NM DAT	
APCH FRUSTRADA: Ascenso 3500' R358 VOR DAT, ingrese HLDG TUDUK 178° derecho o según autorización ATC. <i>Missed Apch: Climb to 3500' on R358 DAT VOR, enter on HLDG TUDUK 178° right or according to ATC clearance.</i>							



CIRCUITOS	DIRECTO RWY 35 <i>Straight in RWY 35</i>		CIRCULANDO OESTE <i>Circling West</i>	ALTN <i>Alternate Minimums</i>
	MDA <b>1140' (470')</b>			
A	1.6 Km		1140' (470')	VER PAG. GEN 2.19
B			1.6 Km	
C	2.4 Km		2.4 Km	
D			3.2 Km	

Veloc. Terrestre Kts	80	100	120	140	160
Angulo DES 2,88°	404'	509'	611'	713'	815'
MAPt en D0.5					

CAMBIO: VAR / NR IAC  
Change: VAR / NR IAC

DGAC AMDT 96

16 MAYO 2024

DASA / SECCION AS-MAP